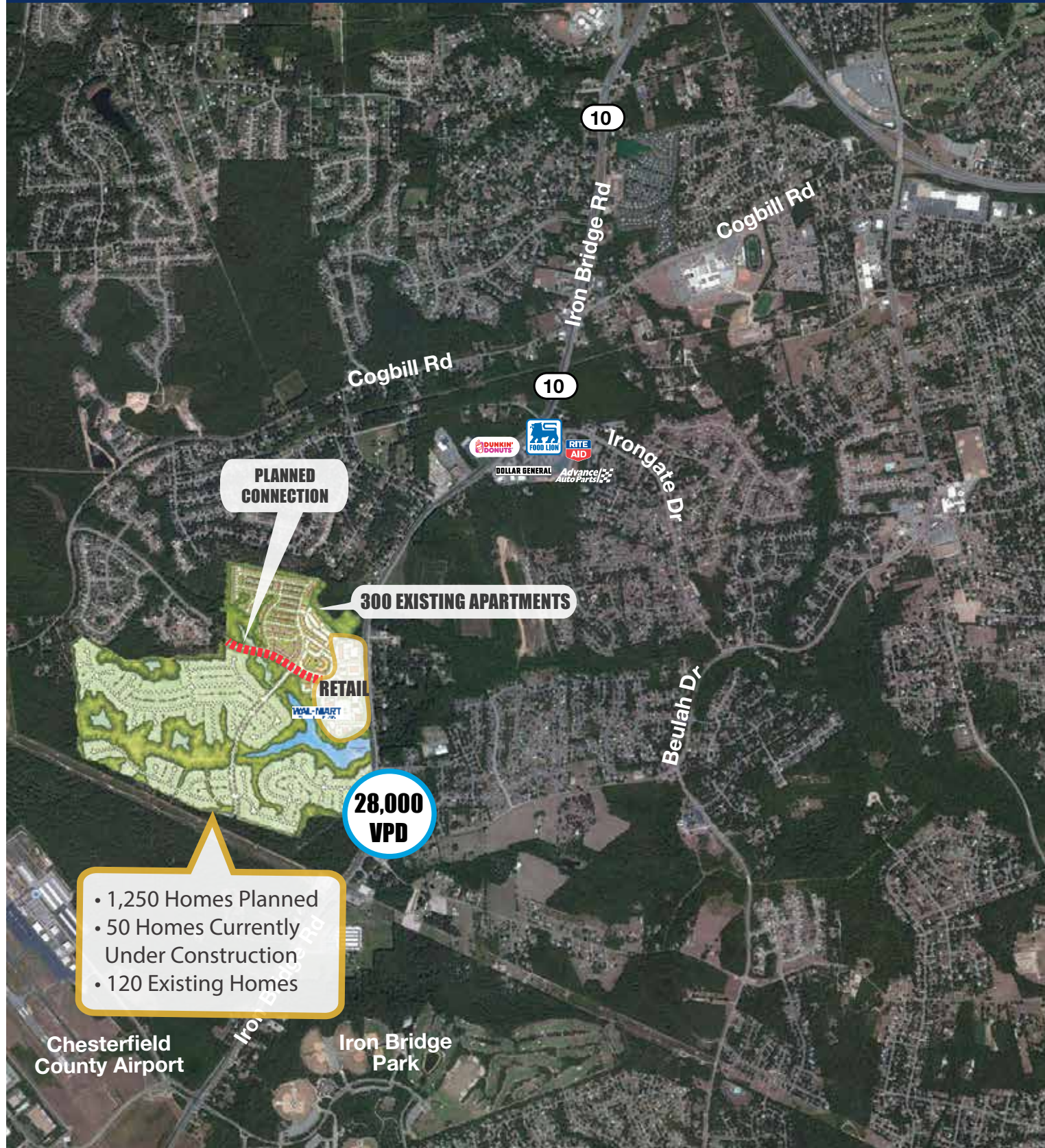


A Variety of Opportunities to Include Outparcels, Build to Suits, Inline and Junior Anchor Space



A Variety of Opportunities to Include Outparcels, Build to Suits, Inline and Junior Anchor Space



STATISTICAL SNAPSHOT 3-MILE RADIUS, 2013 DEMOS



POPULATION
48,843



NEARBY AIRPORTS
**Richmond
International &
Chesterfield**



TRAFFIC COUNTS
28,000 VPD
(Iron Bridge Road)



TRADE AREA
**Approx. Fifteen Minutes from
Downtown Richmond**



WATERMARK TOWNCENTER
**400 Acres | 1,200 Residences
220,000 SF Retail/Office**

WATERMARK TOWNCENTER FACTS AT-A-GLANCE

- Unique mixed-use community combining a broad variety of elegant homes with a retail Village Center
- Comprised of almost 400 acres, Watermark will feature over 1,200 residences and 220,000 square feet of upscale retail
- Expected demographics will include families, professionals and empty nesters
- Beautifully planned community with parks, playgrounds, fields and three miles of lush, wooded walking trails
- Easy access to major roads that lead to Richmond

DEMOGRAPHICS (2013)	1 MILE	3 MILES	5 MILES
POPULATION	48,843	117,762	213,200
AVG HH INCOME	\$64,968	\$62,416	\$60,541
EMPLOYEES	21,137	49,561	99,099

SITE FACTS

SPACE: Outparcels, Build to Suits Inline and Junior Anchor Space
TRAFFIC COUNTS: 28,000 (Iron Bridge Road)

CONTACT:

Lindsey Barden
lbarden@rappaportco.com
(T) 804.909.2002

A Variety of Opportunities to Include Outparcels, Build to Suits, Inline and Junior Anchor Space

